

# SPEC SHEET + MEASUREMENTS



## Champion® Powerblend® Pullover Hoodie. S700

### Product photo



- 9-ounce, 50/50 U.S. grown cotton/poly
- 50/40/10 cotton/poly/black poly (Light Steel)
- 50/48/2 cotton/poly/black poly (Silver Grey)
- Double Dry technology wicks moisture
- Two-ply hood with dyed-to-match drawcords
- 1x1 rib knit sleeve cuffs and hem
- Front pouch pocket
- Embroidered Champion “C” logo at left cuff
- Woven back neck label

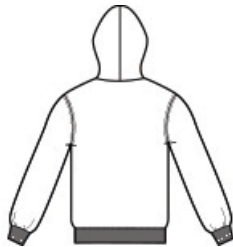
### CARE INSTRUCTIONS

Machine wash cold with like colors. Do not bleach. Tumble dry low. Cool iron if necessary.

### Sketches



front



back

# SPEC SHEET + MEASUREMENTS



## Champion® Powerblend® Pullover Hoodie. S700

### PRODUCT MEASUREMENTS

	S	M	L	XL	2XL	3XL
Body Length at Back	27	28	29	30	31	32
Chest	20	22	24	26	28	30
Set in Sleeve Length	36	36 3/4	37 1/2	38 1/4	39	39 3/8

**Body Length at Back:** Measured from high point shoulder to finished hem at back.

**Chest:** Measured across the chest one inch below armhole when laid flat.

**Set in Sleeve Length:** Measure from Center Back neck to shoulder point to sleeve hem.

### SIZE CHARTS

	S	M	L	XL	2XL	3XL	4XL
Chest	34-36	38-40	42-44	46-48	50-52	54-56	58-60

# SPEC SHEET + MEASUREMENTS



## Champion® Powerblend® Pullover Hoodie. S700

### HOW TO MEASURE



#### CHEST

Measure under the arm and around the fullest part of the chest with arms down, keeping tape horizontal.

### COLORS



Black  
PMS BLACK  
6C

BlueLagoon

BodyBlush



Charcoal  
Heather

ChocBrown



Dark Green  
PMS 5535C

DkGreenHt

EmeraldGrn

FreshOlive

Gold

GoldGlint

LateNgtBlu



Light Steel



Maroon  
PMS 5115C



Navy  
PMS 2767C



Navy Heather

Orange

RedRivClay



Royal Blue  
PMS 2144C



Royal Blue  
Heather



Sand  
PMS WARM  
GRAY 3C

ScarHthr



Scarlet  
PMS 186C



Silver Grey



Stone Gray  
PMS COOL  
GRAY 2C



White

WowPink